

An aerial photograph of an industrial facility, likely a refinery or chemical plant, situated along a coastline. The facility features numerous large white storage tanks, industrial buildings, and piping. A large red and white tanker ship is docked at a pier in the foreground. The surrounding landscape is hilly and appears to be a mix of natural terrain and agricultural fields. The water is a deep blue-green color.

Classification Societies: what are they?

Theodosis Stamatellos

Lloyd's Register Regional Manager for South Europe

A large, stylized logo consisting of the letters 'L' and 'R' in a bold, serif font. The letters are white and are set against a dark, semi-transparent background that allows the underlying aerial image to be visible through them.

LR

1760 ... it all started with a cup of coffee



1966-67

REGISTER OF SHIPS

VISHVA PRATAP

510094 **VISHVA PRATAP** 7055 AB 1957-4 Ansaldo S.p.A.—Gen M OSD Oil 2SA 7Cy. 750 × 1320 mm
 VVWX exElettra Fassio-64 3692 491' 11" 63' 11" 25' 11" 1/8" 5 Ho 58½', 51½', 50', 43½', 62½' 5500bhp 2117t (hvf)
 1149 **The Shipping Corporation** 10697 ✕Classed LR until 1/65 446' 2" 63' 8" 30' 1" G.635301 B.55786 S.A. Fiat S.G.M. Tur
 Df Esd of India Ltd. F51' 1 dk & S dk 5 Ha (stl) (26½', 34', 36½', 34½' 3 × 200kW 220V d.c. 14½k
 Gc Rdr Bombay Indian RW ×24½'
 RT rf 8" 10W Der 1(15) 1(8) 10(5)

53R237 **VISHVA PREM** 6263 ✕100A1 1963-1 Hindustan Shoyd Ltd.—Vam M Ref OSD/CSD Oil 2SA 7Cy. 780 × 1400 mm

REGISTER OF SHIPS

1966-67

1 LR Identity No.	2 SHIP'S NAME	3 TONS	4 CLASSIFICATION		5 HULL			6 CARGO CAPACITIES/HANDLING				7 MACHINERY			
			Hull	Latest SS recorded	Date of build	Shipbuilders—Place of build		Description of ship	No. of Passengers			Engines	Bore and stroke		
Call Sign	Former names	Gross Net Summer Deadwt	Machinery	Refrigerated cargo installation	Length overall	Breadth extreme	Draught maximum	No. of Holds & lengths/No. of Cargo tanks				Total horsepower	Type	Fuel Bunkers (tons)	
Official No.	OWNERS	Gross Net Summer Deadwt	Machinery numeral	Equipment letter	Length B.P.	Breadth moulded	Depth moulded	Grain/Liquid c.ft.	Bale c.ft.	Insulated spaces c.ft.	Heating coils	Enginebuilders	Where manufactured		
Navigational aids	Managers	Gross Net Summer Deadwt	Machinery numeral	Equipment letter	Superstructures	Decks		No. of Hatchways & sizes				Bollers	Heating surface	Furnaces	
	Port of Registry	Flag			Riveted/Welded	Bulkheads	Alterations	No. of Winches		Cranes/Derricks No./SWL tons		Aux. electrical generating plant		Speed knots	
					Rise of floor	Keel	Water ballast								

538238 **VISHVA SHANTI** 6238 ✕100A1 1962-8 Hindustan Shpyd Ltd.—Vgm M Ref OSD/CSD Oil 2SA 7Cy. 780 × 1400 mm
 VWQK tunnel side tanks— 504' 8" 64' 0" 25' 6½"/29' 8½" 5 Ho 36½', 49', 39½', 39½', 39½' 8100bhp 1128t (hvf)
 1010 **The Shipping Corporation** 9586 vegetable oil 464' 0" 63' 10" 39' 1" G.664350 B.611670 In.5278 Masch. Augsburg-Nürnberg Aug
 Df Esd of India Ltd. P32' F41' 1 dk & S dk, 3rd dk in No. 3 5 Ha (36½', 49', 39½', 39½', 39½' × 23') AuxB 100tb
 Gc Rdr Bombay Indian RW 7BH hold 16W Der 1(40) 1(20) 10(10) 6(5) 3 × 312kW 400V 50c/s a.c. 17k
 EL 2½"SQ rf 4" WB2105t incl. Tunnel tanks 1227t

538239 **VISHVA SUDHA** 8134 ✕100A1 SS 10/62 1959-3 Blohm & Voss A.G.—Ham M OSD/CSD Mchy.aft Oil 2SA 8Cy. 700 × 1200 mm
 VWRV exWestfalia-62 4594 Str. nav. ice 526' 8" 65' 11" 26' 4½"/30' 0½" 6 Ho 39', 44½', 44½', 36½', 44½', 36½' 6650bhp MAN 1128t (hvf)
 1058 **The Shipping Corporation** 12568 ✕LMC 492' 3" 65' 7½' 39' 9" P102' F46' 1 dk & S dk 6 Ha (stl) (32½', 36½', 36½', 36½', 36½' Blohm & Voss A.G. 114tb
 Df Esd of India Ltd. 10350 RW 9BH 26½' × 29½') WTAuxB 114tb
 Gc Rdr Bombay Indian 7619 MN1330 EL ½"SQ rf nil WB5766t incl. DTm1070t TwD1090t Der.1(50) 1(20) 4(5-10) 4(5) 4(3-5) 3 × 290kW 380V 50c/s a.c.
 RTm/h 15206

538240 **VISHVA USHA** 8186 ✕100A1 SS 6/65 1960-2 Cant. Nav. Apuania—M CSD Mchy.aft Oil 2SA 6Cy. 750 × 1320 mm
 VWLK strengthened for heavy Marina di Carrara 5 Ho 56', 54½', 53½', 98½', 53' 7560bhp 1258t (hvf)
 S.A. Fiat S.G.M. Tur

LR

Lloyd's Register of Shipping.

SECRET.

THE INFORMATION CONTAINED IN THIS REGISTER AND ITS SUPPLEMENTS IS ISSUED UNDER THE PROVISIONS OF THE OFFICIAL SECRETS ACTS AND/OR THEIR EQUIVALENT OVERSEAS. ANY FAILURE ADEQUATELY TO SAFEGUARD THE INFORMATION CONTAINED THEREIN WILL RENDER THE SUBSCRIBER LIABLE TO THE PENALTIES PROVIDED FOR BY THESE ACTS.

This Book is issued by Lloyd's Register of Shipping with the consent of His Britannic Majesty's Government.



This copy of the Register Book is supplied for the sole use of the Subscriber to whom it is issued, and who is to ensure that access to the information contained therein or in any of its Supplements shall only be allowed to specially authorised members of the staff.

**THE BOOK AND ITS SUPPLEMENTS ARE INVARIABLY
TO BE KEPT LOCKED UP IN THE SAFEST PLACE
AVAILABLE WHEN NOT IN USE. EVERY EFFORT
MUST BE TAKEN TO PREVENT THEM FALLING INTO
THE HANDS OF ENEMY AGENTS.**

N.B.—It is essential that a receipt be returned for this volume and for each Supplement, as received.

LOSS OF THIS REGISTER OR OF ANY SUPPLEMENTS MUST BE REPORTED AT ONCE TO LLOYD'S REGISTER OF SHIPPING AND TO THE NEAREST BRITISH NAVAL AUTHORITY OR BRITISH CONSUL.

**SECRET
SEE NOTICE
INSIDE COVER**

699



**MINISTRY OF WAR TRANSPORT
ALEXANDRIA**

1943-44

REGISTER

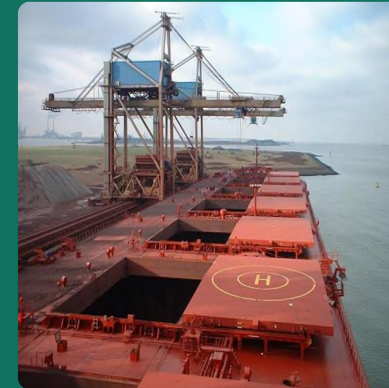
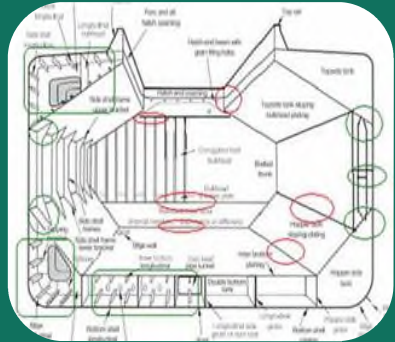
LR

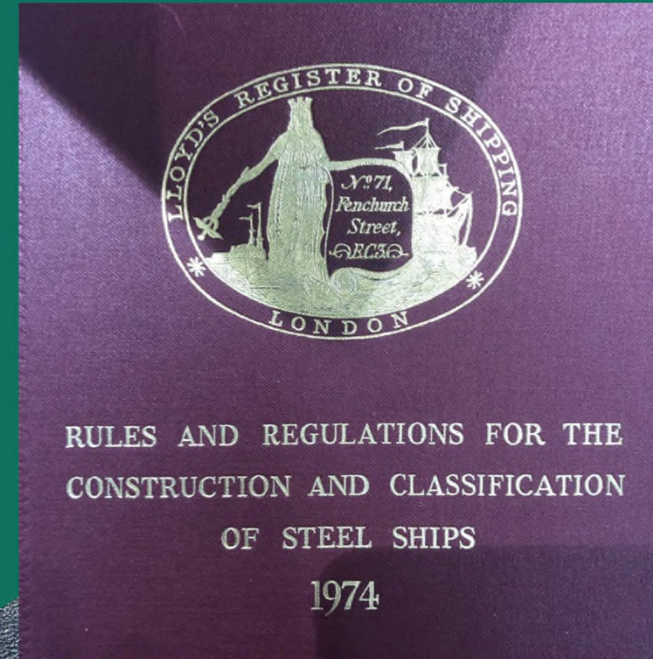
design

construction

delivery

operation





IACS International Association of Classification Societies

 **EMSA**
European Maritime Safety Agency



ClassNK



Maritime advisory

Technical advisory


Services

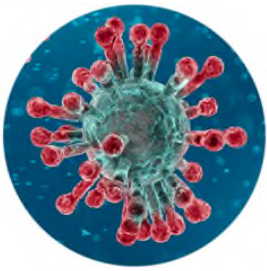
**Sustainability and
Decarbonization**

● Value-added services

Find out more about
maritime performance services.

Contact us.





Covid & Class Surveys

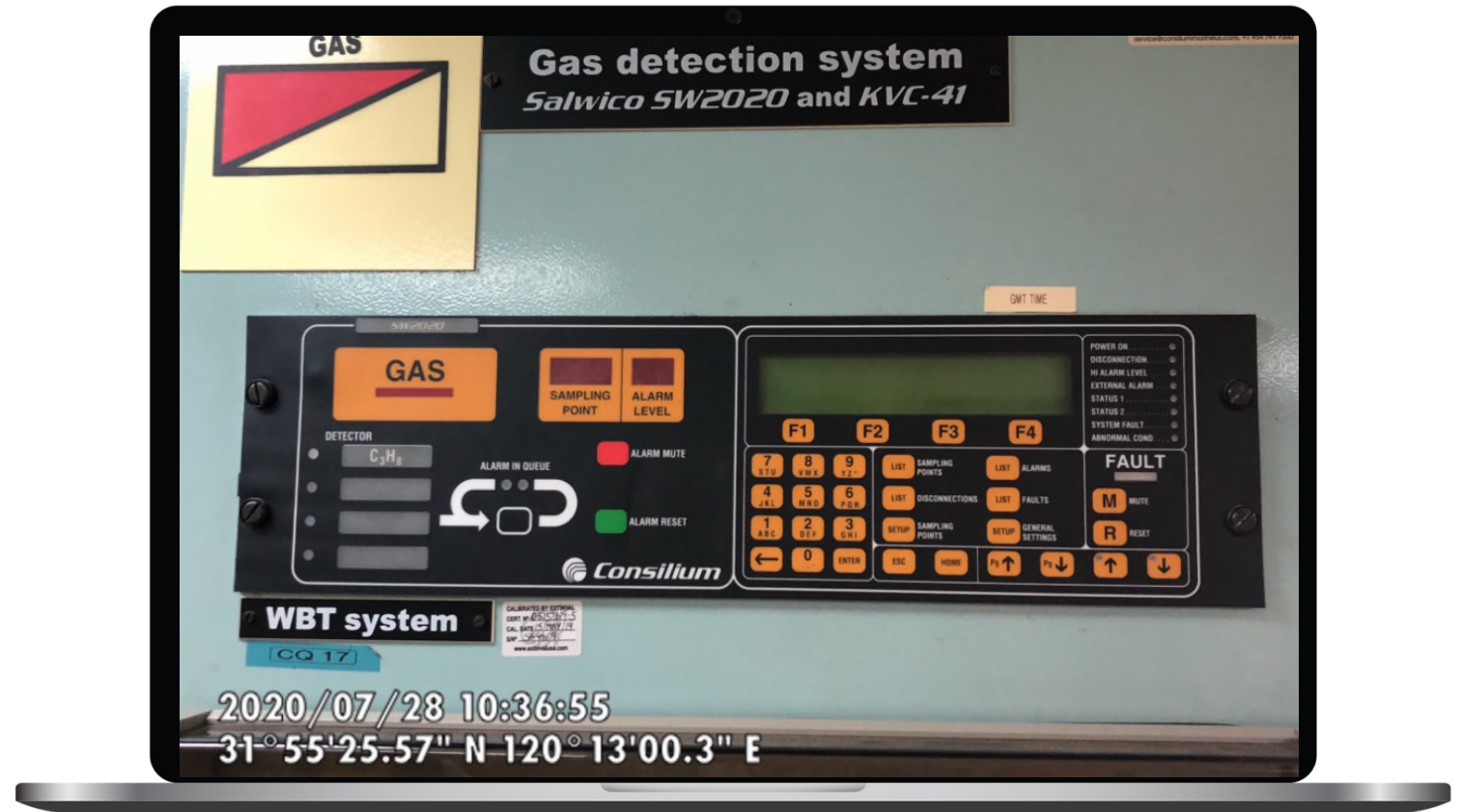




photo from Council of Europe
www.coe.int

LR



Thank you

Theodosios Stamatellos

Lloyd's Register Regional Manager for South Europe

Theodosios.Stamatellos@lr.org



LR